

biolas

REYA
HYBRID THROMBUS MANAGEMENT



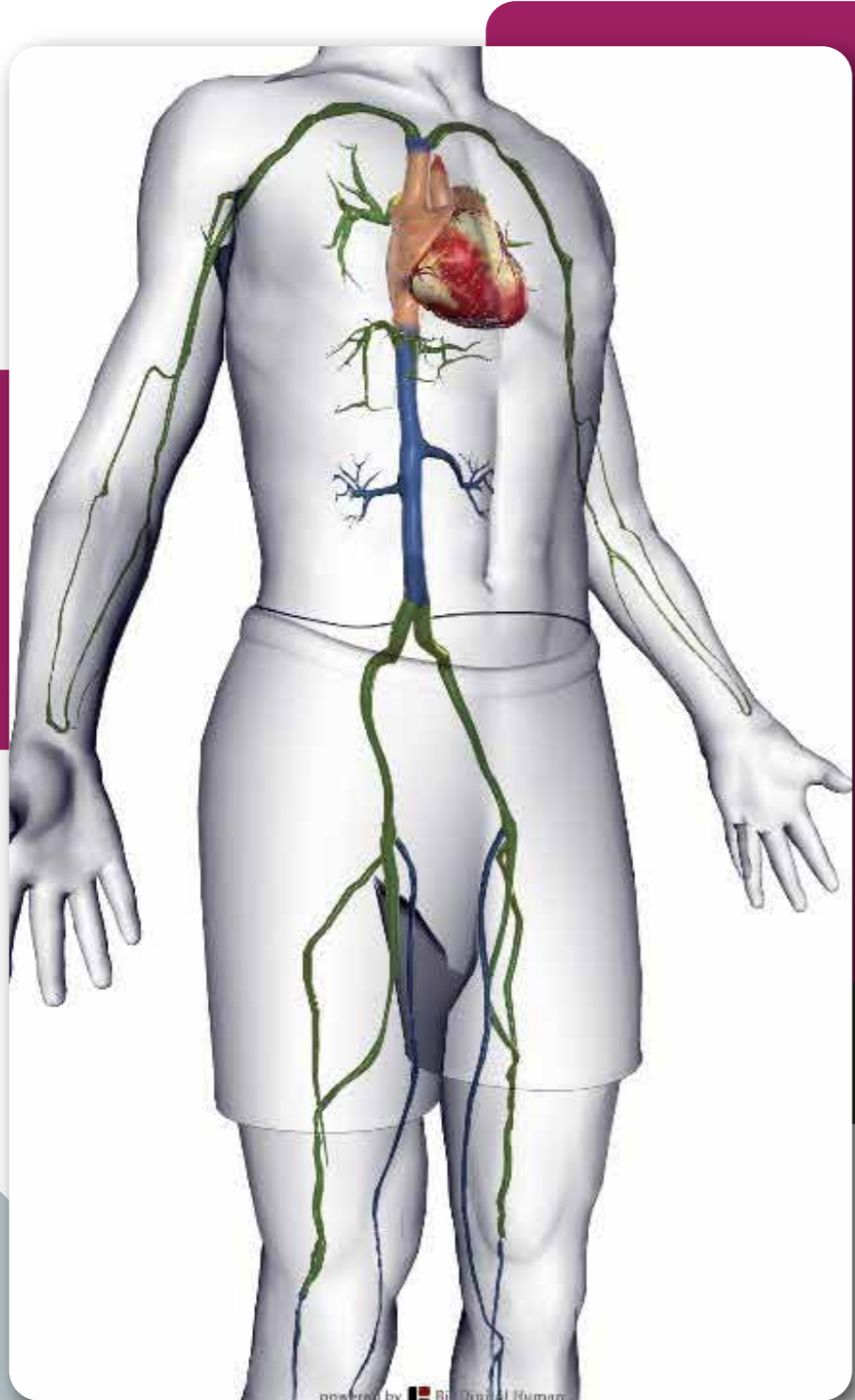
biolas®
HEALTH INC.

Product Specifications

Shaft Length	Diameter	Tip Diameter	RPM
90 cm	6F	9 mm	3000 – 4000- 6000

REYATHROMBECTOMY

Reya® Thrombectomy device is indicated for mechanical declotting of clotted vessels. With its harmonic sinusoidal wave shaped active tip design, Reya® Thrombectomy offers a unique treatment standard with both mechanical and thrombolytic treatment. Active tip gently mixes and fragmentizes thrombus. Because of harmonic design active tip creates a vortex effects that won't let emboli get away to distal. In the same time infusion port, which is connected to active tip, allows TPA injection to the application area. This way thrombus dissolves with mechano-chemical effect easily. Physician can get immediate results with venography after treatment.



Indicates Vessels

Peripheral Veins

Pulmonary Artery

Subclavian Vein

Hepatic Vein

Advantages

- Harmonic Sinusoidal Tip Design
 - Cover all vessel lumen and effects wall adherent thrombus
 - Creates vortex effect and prevents distal embolism
- Guidewire Shaped Atraumatic and Hydrophilic Active Tip
 - Preserves vessel wall
 - Excellent steerability
- Built-in infusion port
 - Allows infusion of TPA and contrast media
 - Allows aspiration of thrombus
- Rotation Speed adjustment
 - Three different rotation speeds
 - Allows physician to perform more gentle or more aggressive treatment depending on application area and age of thrombus
- Decreases thrombolytic treatment dose significantly
- Decreases post-thrombotic syndrome significantly
- Decreases length of stay in hospital
- No capital equipment
- Quick Setup

